



Galileo

Wall mirror composed of a 60x5mm calendered steel plate structure, welded to a rear ring on which are screwed aluminum plates to secure the mirror on the wall. Mirror, 4mm thick, coupled with an HPL panel and screwed to the ring. Stainless steel cable, passing through the circumference of the mirror, with the steel wall mirror support and end stop element, fixed to its end.

Brand: **Living Divani, Made in Italy**

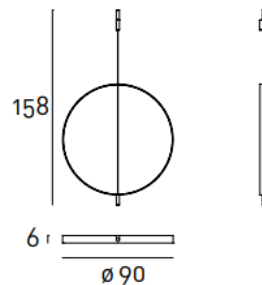
Item type: Mirror

Item Code: GALS090

Designer: Mario Ferrarini

Finish: Black Lacquered

Dimension: 90Ø x 131 cm



Click the link for more options and finishes:

<https://livingdivani.it/en/products/tables-and-complements/galileo/>